

AMTRAK FINANCIAL RESULTS FY 2010

(000)

Income

Passenger related	\$1,973.9
Other (exc. Subsidy)	<u>510.5</u>
	\$2,484.4

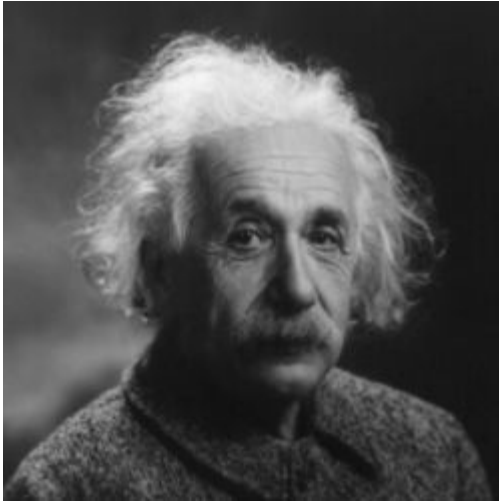
Expense

Payroll	\$1,791.7
Other	1,471.3
Interest (net)	100.9
Depreciation	<u>593.1</u>
	\$3,957.0

=====

Net Result

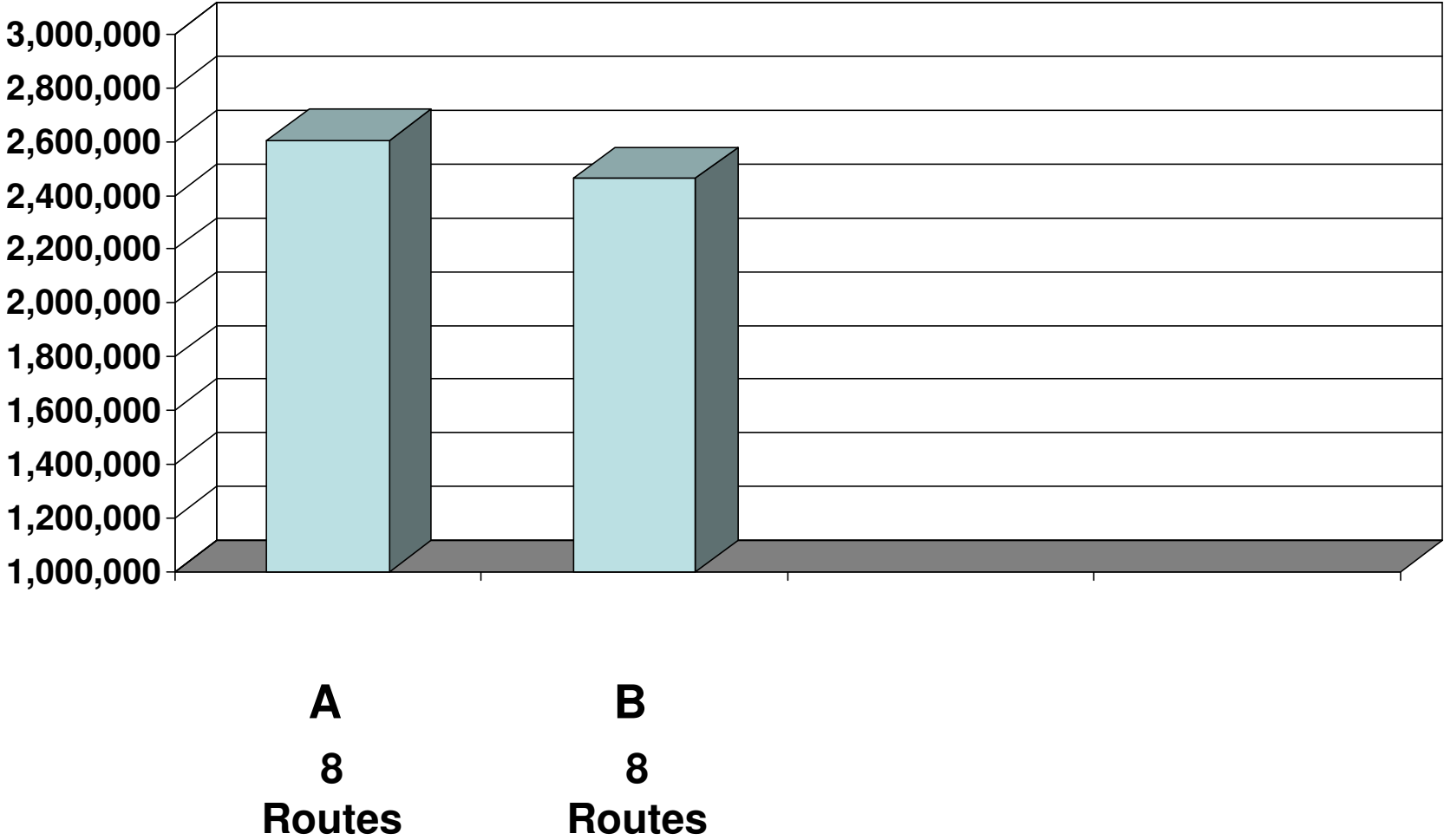
(1,472.6)



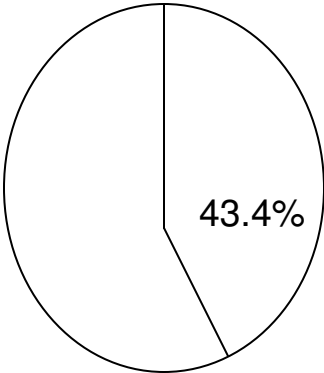
“Insanity consists of repeating the same actions and expecting different results.”

Attributed to Albert Einstein

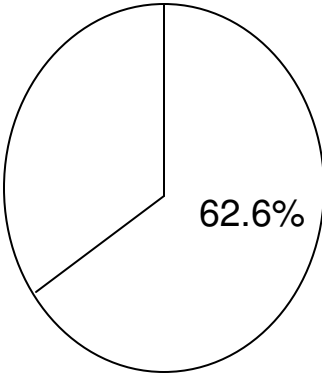
CHICAGO HUB RIDERS FY 2010



CHICAGO HUB LOAD FACTOR

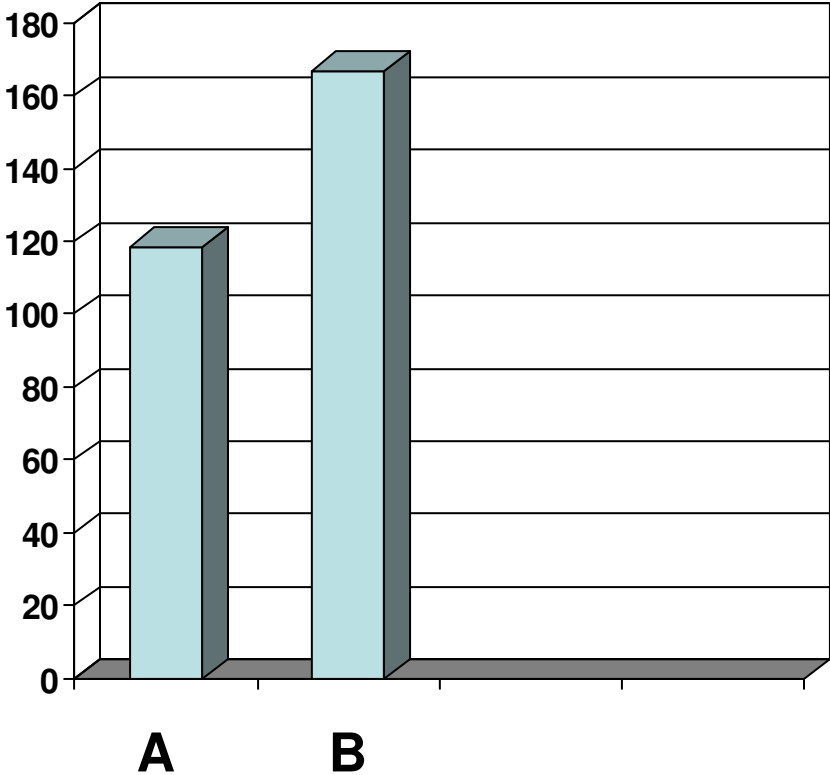


A



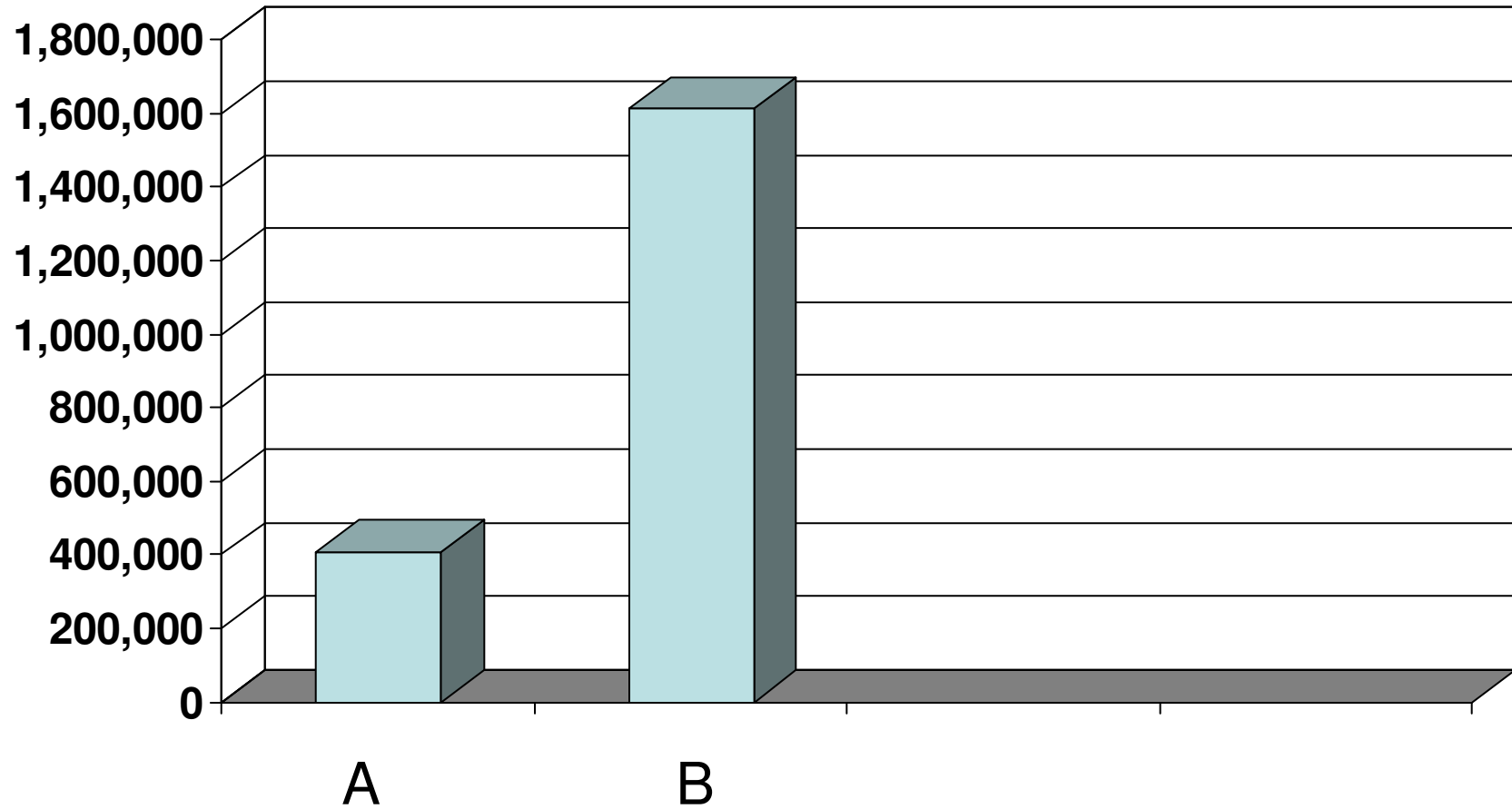
B

CHICAGO HUB PM/TM

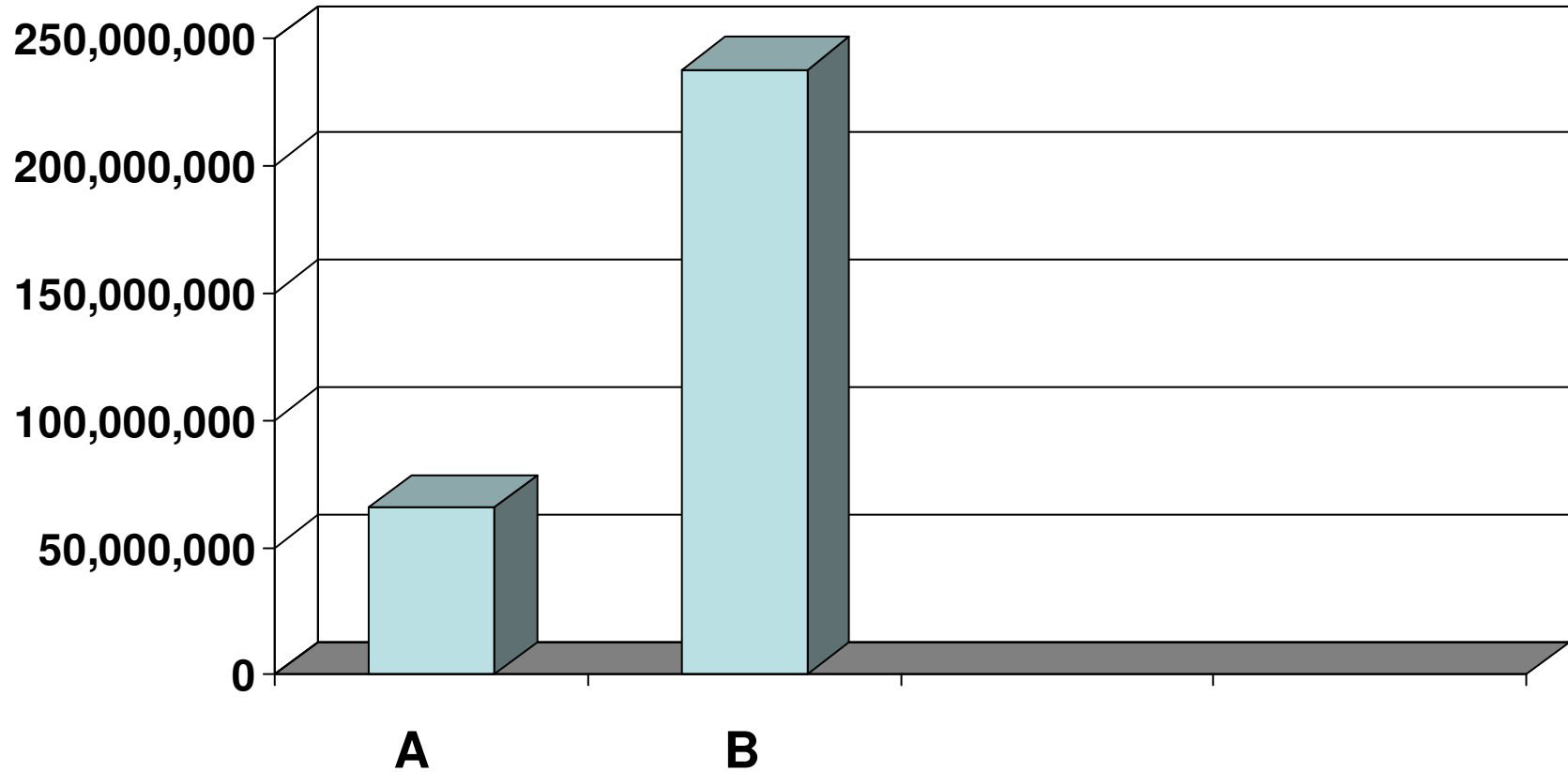


CHICAGO HUB

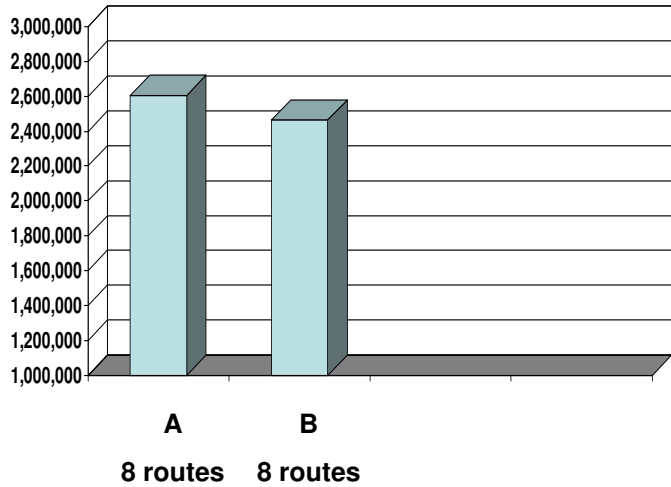
REVENUE PASSENGER MILES (000)



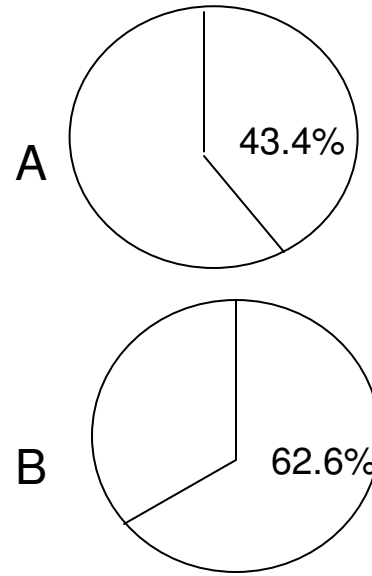
CHICAGO HUB REVENUE



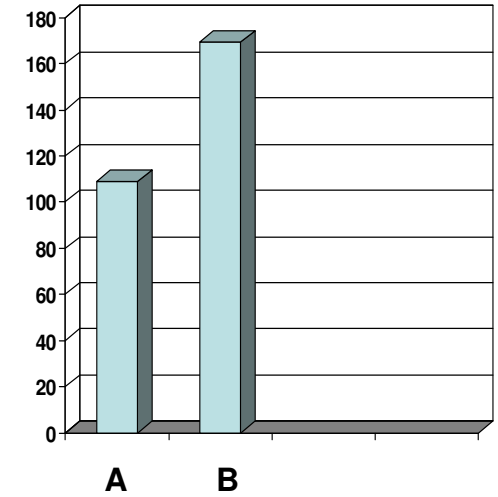
CHICAGO HUB RIDERS



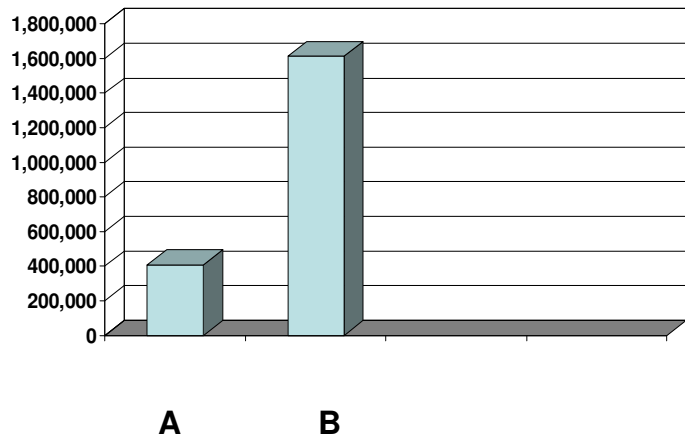
CHICAGO HUB LOAD FACTOR



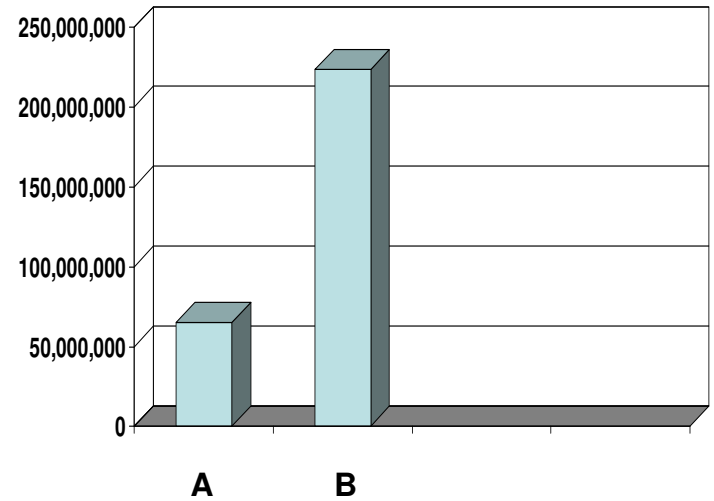
CHICAGO HUB PM/TM



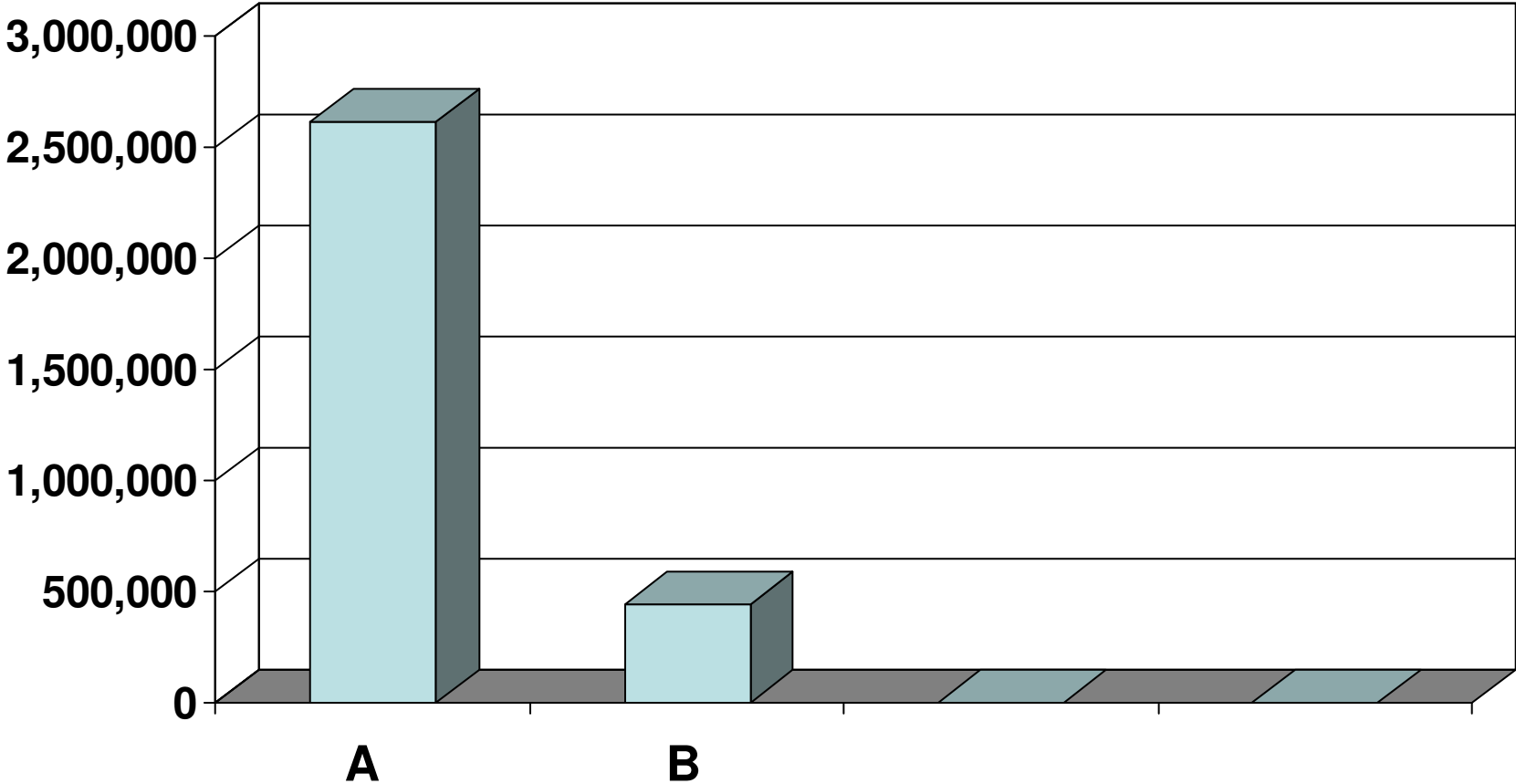
CHICAGO HUB REVENUE PASSENGER MILES (000)



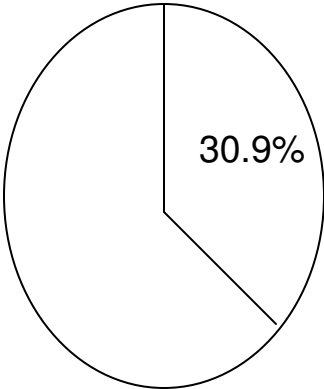
CHICAGO HUB REVENUE



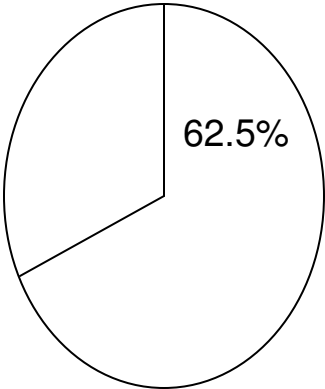
CALIFORNIA RIDERS



CALIFORNIA LOAD FACTOR

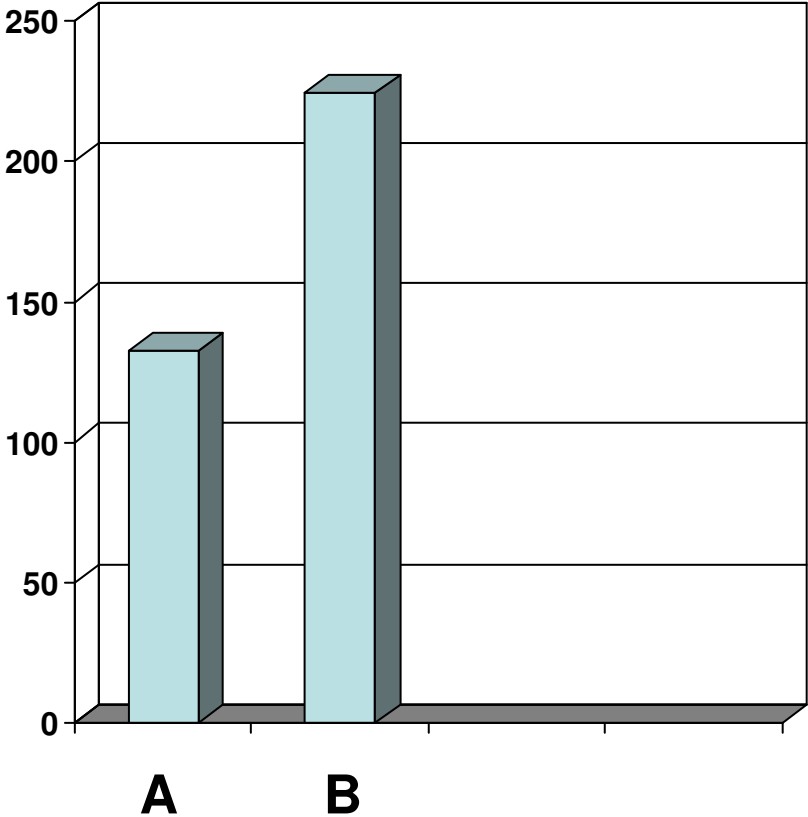


A

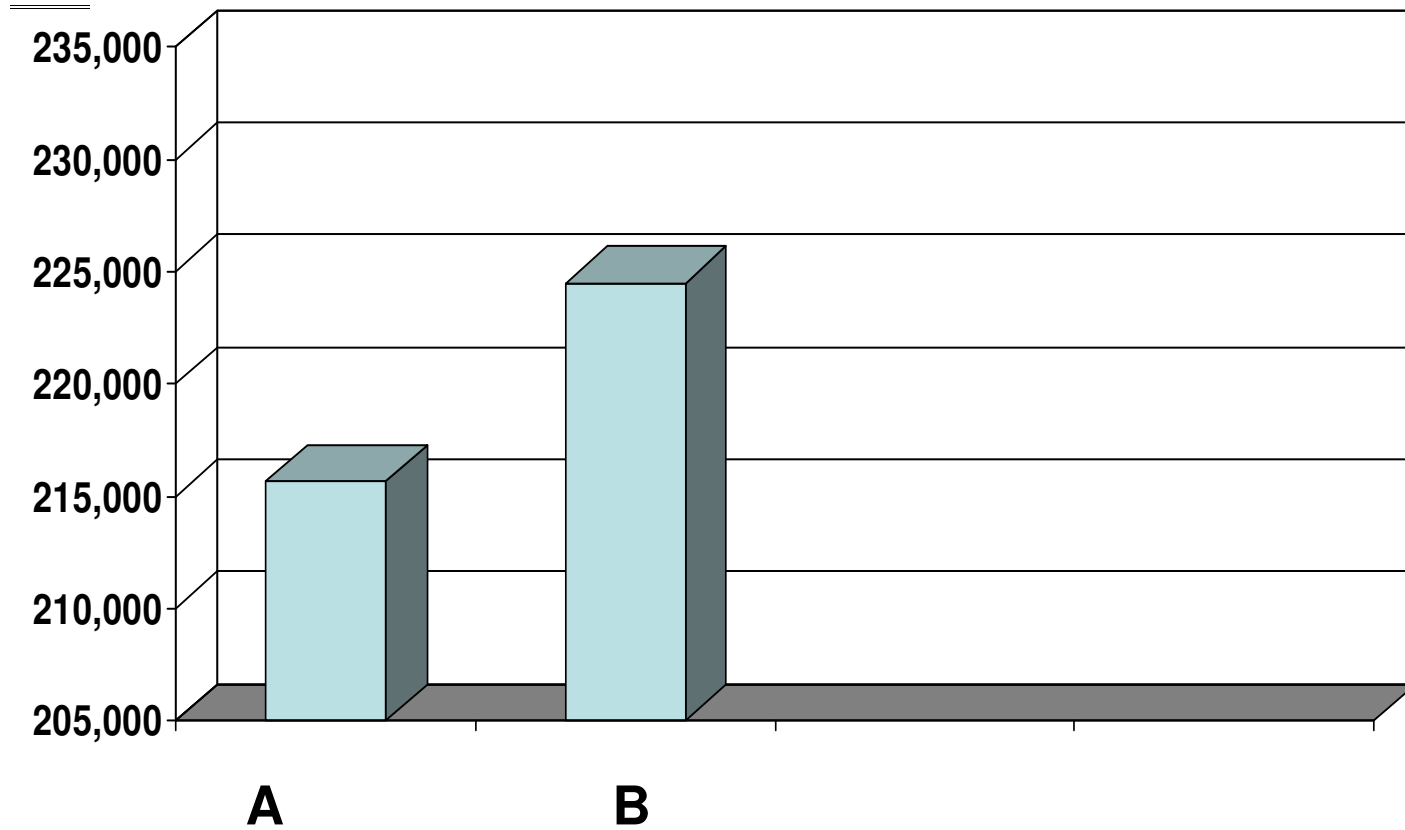


B

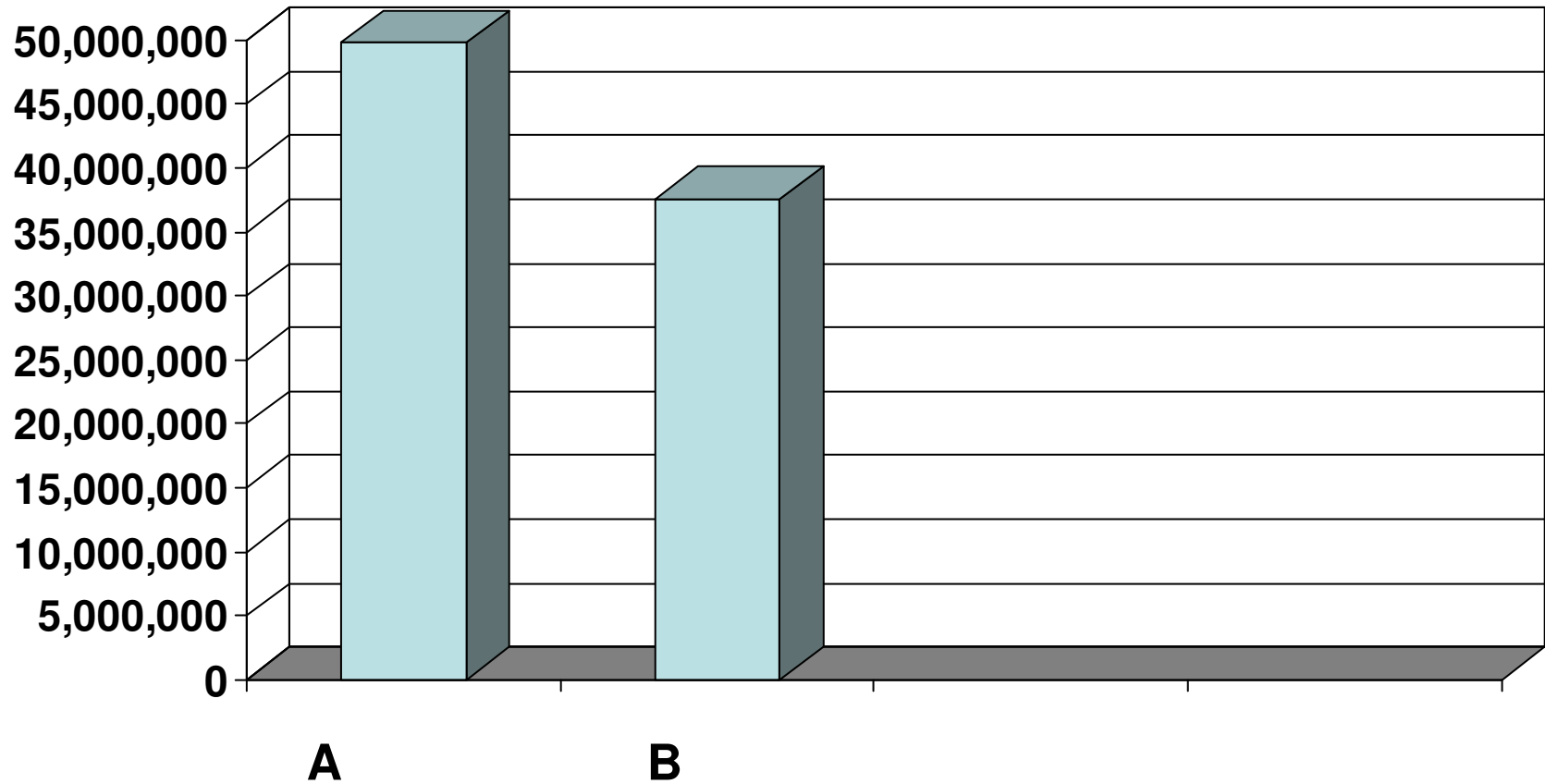
PM/TM



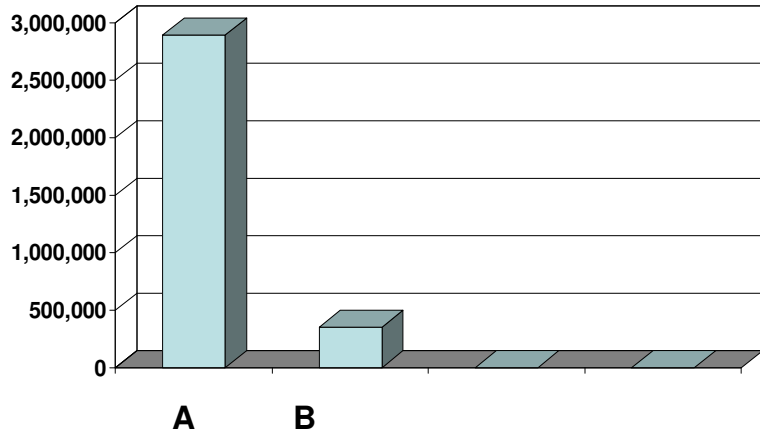
CALIFORNIA REVENUE PASSENGER MILES (000)



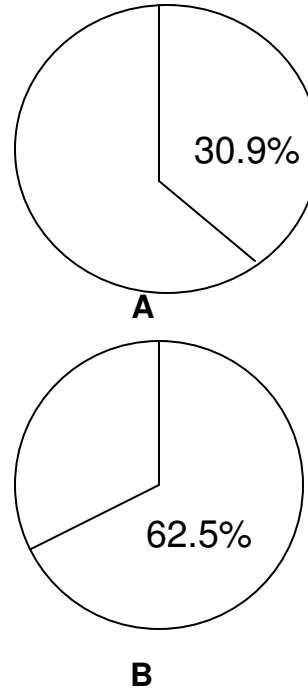
CALIFORNIA REVENUE



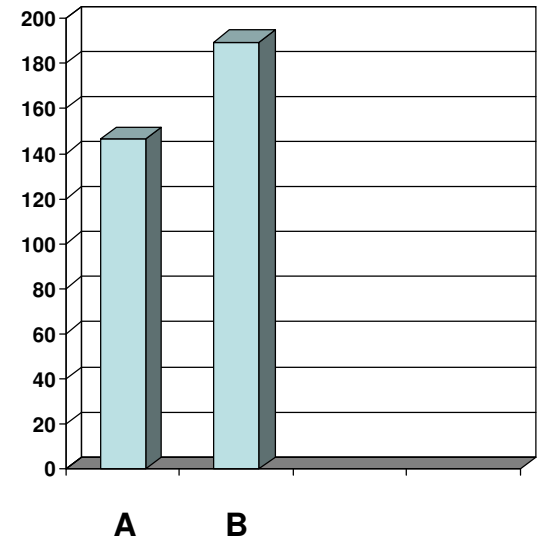
CALIFORNIA RIDERS



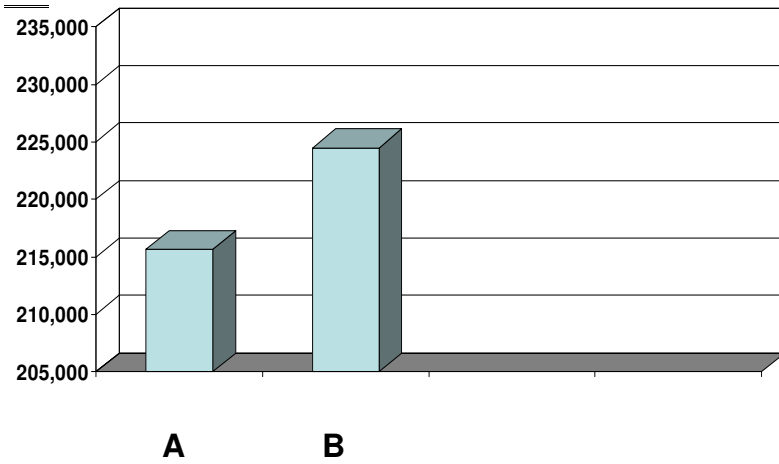
CALIFORNIA LOAD FACTOR



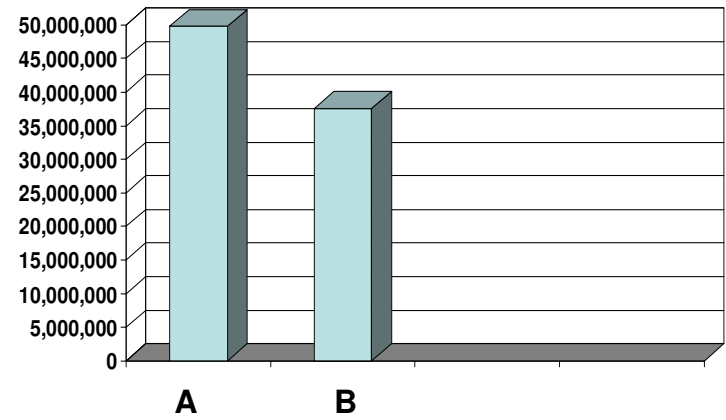
PM/TM



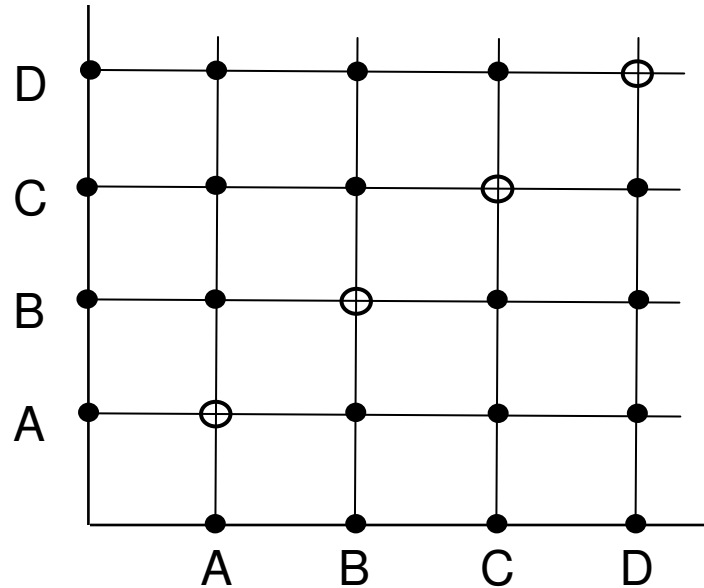
**CALIFORNIA REVENUE
PASSENGER MILES (000)**



CALIFORNIA REVENUE



Matrix Theory

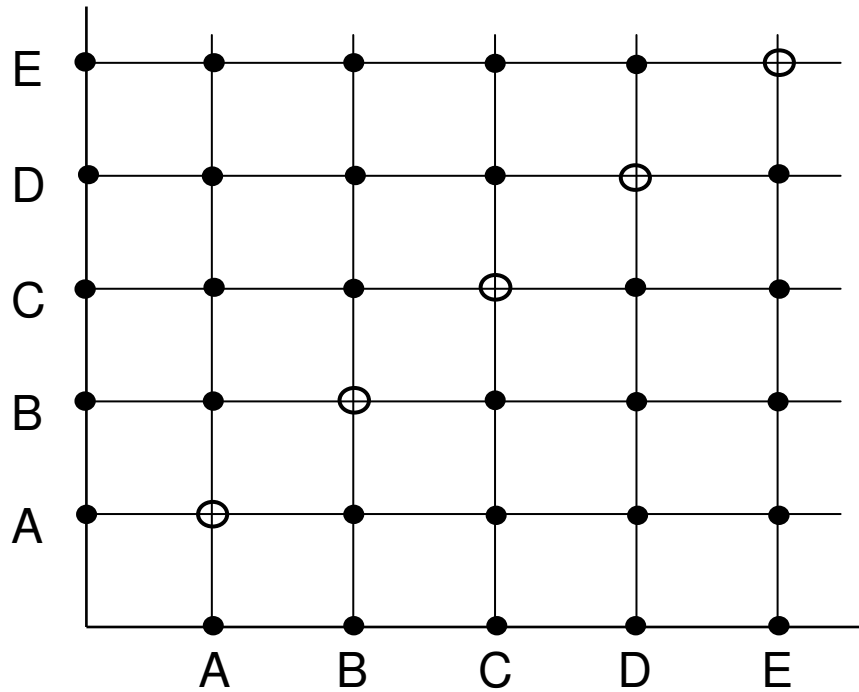


● = Usable origin – destination pairings
⊕ = Null set

$$\text{Utility} = N \cdot N (-N) = N^2 - N$$

$$N = 4 \quad U = 12$$

Matrix Theory

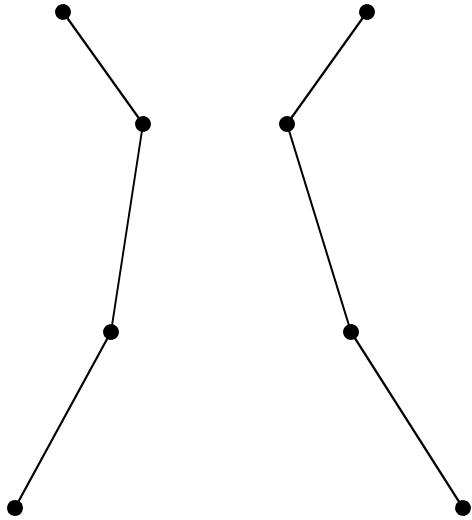


● = Usable origin – destination pairings
○ = Null set

$$\text{Utility} = N \cdot N (-N) = N^2 - N$$

$$N = 5 \quad U = 20$$

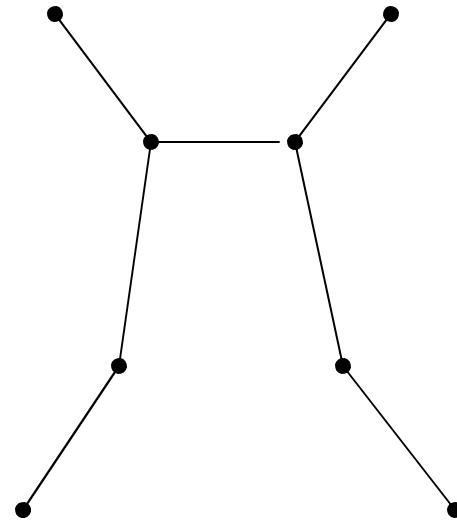
NETWORK A



O/D PAIRS:

$$12 + 12$$

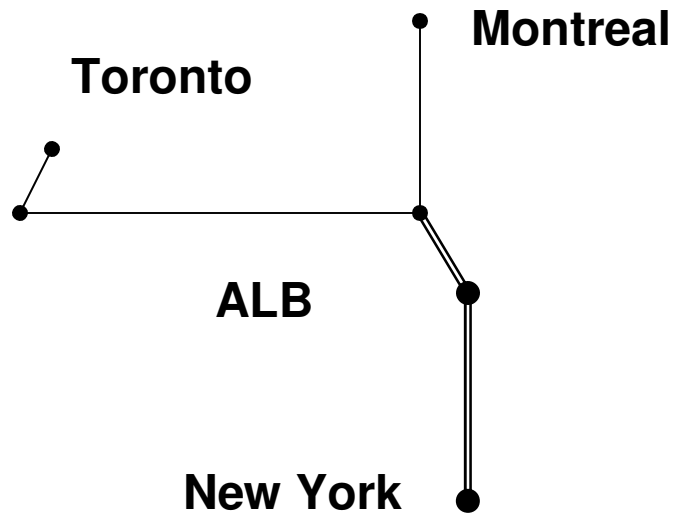
NETWORK B



O/D PAIRS = 42

ALBANY HUB

AMTRAK APPROACH



MATRIX APPROACH

